

BALDOR® • RELIANCE 

Product Information Packet

VJPFPM3313T

10//7.5HP,1760//1460RPM,3PH,60//50HZ,215

Part Detail							
Revision:	E	Status:	PRD/A	Change #:		Proprietary:	No
Type:	AC	Elec. Spec:	37WGR912	CD Diagram:	CD0005	Mfg Plant:	
Mech. Spec:	37N800	Layout:	37LYN800	Poles:	04	Created Date:	03-17-2016
Base:	N	Eff. Date:	07-18-2019	Leads:	9#14		

Specs			
Catalog Number:	VJPFPM3313T	Front Shaft Indicator:	None
Enclosure:	OPSB	Heater Indicator:	No Heater
Frame:	215JP	Insulation Class:	F
Frame Material:	Steel	Inverter Code:	Not Inverter
Output @ Frequency:	10.000 HP @ 60 HZ	KVA Code:	H
	7.500 HP @ 50 HZ	Lifting Lugs:	Vertical Lifting Lugs
Synchronous Speed @ Frequency:	1500 RPM @ 50 HZ	Locked Bearing Indicator:	Locked Bearing
Voltage @ Frequency:	460.0 V @ 60 HZ	Motor Lead Quantity/Wire Size:	9 @ 14 AWG
	380.0 V @ 50 HZ	Motor Lead Exit:	Ko Box
	230.0 V @ 60 HZ	Motor Lead Termination:	Flying Leads
	190.0 V @ 50 HZ	Motor Type:	3738M
XP Class and Group:	None	Mounting Arrangement:	F1
XP Division:	Not Applicable	Power Factor:	82
Agency Approvals:	CSA EEV	Product Family:	General Purpose
	UL	Pulley End Bearing Type:	Ball
Auxillary Box:	No Auxillary Box	Pulley Face Code:	C-Face
Auxillary Box Lead Termination:	None	Pulley Shaft Indicator:	Tapped & Key
Base Indicator:	No Mounting	Rodent Screen:	None

Bearing Grease Type:	Polyrex EM (-20F +300F)	RoHS Status:	ROHS COMPLIANT
Blower:	None	Shaft Extension Location:	Pulley End
Current @ Voltage:	25.400 A @ 230.0 V	Shaft Ground Indicator:	No Shaft Grounding
	23.400 A @ 190.0 V	Shaft Rotation:	Reversible
	12.700 A @ 460.0 V	Shaft Slinger Indicator:	Shaft Slinger
	11.700 A @ 380.0 V	Speed Code:	Single Speed
Design Code:	B	Motor Standards:	NEMA
Drip Cover:	Drip Cover	Starting Method:	Direct on line
Duty Rating:	CONT	Thermal Device - Bearing:	None
Electrically Isolated Bearing:	Not Electrically Isolated	Thermal Device - Winding:	None
Feedback Device:	NO FEEDBACK	Vibration Sensor Indicator:	No Vibration Sensor
Front Face Code:	Drip Cover Mounting	Winding Thermal 1:	None
		Winding Thermal 2:	None

Nameplate NP3454L											
CAT.NO.	VJPFPM3313T			CUST P/N				I.P.	23		
SPEC.	37N800R912H1			SER.NO.				FRAME	215JP		
HZ	60	HP	10	RPM	1760	HZ	50	HP	7.5	RPM	1465
VOLTS	230/460			CODE	H			VOLTS	190/380		
AMPS	25.4/12.7			DES	B			AMPS	23.4/11.7		
EFF	89.5	SER.F.	1.15	PF	82	EFF	89.5	SER.F.	1.15	PF	81
RATING	40C AMB-CONT			DE BRG	6309			GREASE	POLYREX EM		
BLANK				ODE BRG	6206			MTR. WT.	130		
				CLASS	F			PH	3		
				ENCL	OPSB			CC	010A		
HTR-VOLTS		HTR-AMPS		HTR-WATTS							

Parts List		
Part Number	Description	Quantity
SA317089	SA 37N800R912H1	1.000 EA
RA304684	RA 37N800R912H1	1.000 EA
37CB3006	37 CB CASTING W/1.38 LEAD HOLE @ 6:00	1.000 EA
51XW2520A10	.25-20 X .62, TAPTITE II, HEX WSHR SLTD	2.000 EA
11XW1032G06	10-32 X .38, TAPTITE II, HEX WSHR SLTD U	1.000 EA
37EP3203D02	D00 W/AXIAL FAN MTG	1.000 EA
HW4500A01	1641B(ALEMITE)400 UNIV, GREASE FITT	1.000 EA
HW4500A17	317400 ALEMITE GREASE RELIEF	1.000 EA
HW5100A06	W2420-025 WVY WSHR (WB)	1.000 EA
37EP3401A18	PUEP OPEN 309 BRG W/BAFFLE, GRS, REL, MF	1.000 EA
HW4500A01	1641B(ALEMITE)400 UNIV, GREASE FITT	1.000 EA
HW4500A17	317400 ALEMITE GREASE RELIEF	1.000 EA
10XN2520A36	1/4-20X 2 1/4 HEX HD X	4.000 EA
HW1001A25	LOCKWASHER 1/4, ZINC PLT .493 OD, .255 I	4.000 EA
37AD2000A02	BAFFLE PLATE, STAMPED PLATED	1.000 EA
60XW0632A06	6-32 X 3/8 TORX HEAD SCREW TAPTITE II	4.000 EA
XY3118A12	5/16-18 HEX NUT DIRECTIONAL SERRATION	4.000 EA
39FH4500A09	39 FRAME DRIP COVER FOR 36 FRAME OPSB MO	1.000 EA
HA1040A03	UNICORP #1725M09F162520 SPACER FOR FAN C	3.000 EA
10XN2520A08	1/4-20X1/2 HEX HEAD CAP	3.000 EA
37CB4516	LIPPED LID FOR 37 FRAME NEC KOBX	1.000 EA
51XW0832A07	8-32 X .44, TAPTITE II, HEX WSHR SLTD SE	4.000 EA
HW4600B67	V-RING SLINGER 1.770 X 2.170 X .28 VITON	1.000 EA
HW2501E21	KEY, 1/4 SQ X 2.375	1.000 EA

Parts List (continued)		
Part Number	Description	Quantity
HA7000A02	KEY RETAINER RING, 1 1/8 DIA, 1 3/8 DIA	1.000 EA
85XU0407S04	4X1/4 U DRIVE PIN STAINLESS	4.000 EA
LB1182	WARNING LABEL FOR MOTORS WITH EYENUTS	1.000 EA
MJ1000A02	GREASE, MOBIL POLYREX EM - 124047	0.050 LB
MG1025R44	WILKOFASST, 784.109, CARMINE RED #3002	0.028 GA
37AD2001C01	BAFFLE PLATE, PLASTIC 1.56" WIDTH	1.000 EA
HA3104A35	THRUBOLT .31-18 X 13.687	4.000 EA
LC0005E01	CONN.DIA./WARNING LABEL (LC0005/LB1119N)	1.000 EA
NP3454L	ALUM FIRE PUMP MOTOR(LEGACY/BALDOR ONLY)	1.000 EA
37PA1016	PKG GRP, PRINT PK1035A06	1.000 EA
PK3082	STYROFOAM CRADLE	1.000 EA
PK3085X	FOAM SHAFT SUPPORT PRECUT 4-1/4 X 6-3/4	1.000 EA
MN416A01	TAG-INSTAL-MAINT no wire (1200/bx) 3/19	1.000 EA

AC Induction Motor Performance Data

Record # 56055 - Typical performance - not guaranteed values

Winding: 37WGR912-R001	Type: 3738M	Enclosure: OPSB
-------------------------------	--------------------	------------------------

Nameplate Data				460 V, 60 Hz: High Voltage Connection	
Rated Output (HP)	10//7.5			Full Load Torque	29.9 LB-FT
Volts	230/460//190/380			Start Configuration	direct on line
Full Load Amps	25.4/12.7//23.4/11.7			Breakdown Torque	86.5 LB-FT
R.P.M.	1760//1465			Pull-up Torque	44.4 LB-FT
Hz	60//50	Phase	3	Locked-rotor Torque	52.5 LB-FT
NEMA Design Code	B	KVA Code	H	Starting Current	80.5 A
Service Factor (S.F.)	1.15			No-load Current	5.06 A
NEMA Nom. Eff.	89.5	Power Factor	82	Line-line Res. @ 25°C	1.2634 Ω
Rating - Duty	40C AMB-CONT			Temp. Rise @ Rated Load	45°C
S.F. Amps				Temp. Rise @ S.F. Load	56°C

Load Characteristics 460 V, 60 Hz, 10 HP

% of Rated Load	25	50	75	100	125	150	S.F.
Power Factor	47	68	77	82	83	84	83
Efficiency	87.5	91	91.1	90.3	88.9	87.2	89.5
Speed	1791.8	1783.2	1773	1762.5	1750.9	1737.4	1756
Line amperes	5.84	7.61	9.99	12.7	15.8	19.2	14.6

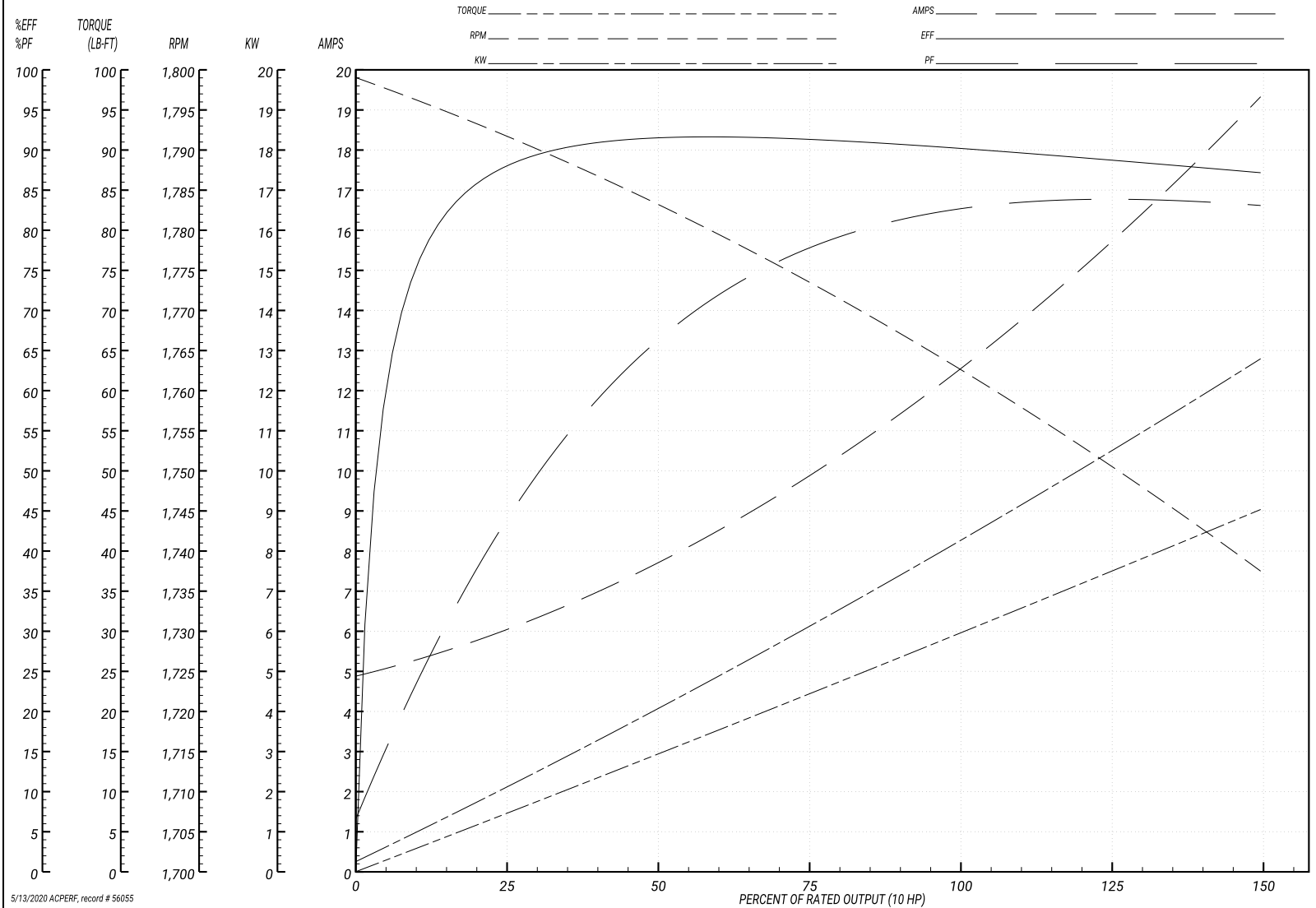
Performance Graph at 460V, 60Hz, 10.0HP Typical performance - Not guaranteed values

ABB Motors and Mechanical Inc.

WINDING # 37WGR912

Typical performance - not guaranteed values.

10 HP 3 PH 60 HZ 1762.5 RPM 460 V 3738M
 TORQUES(LB-FT): PO=86.5 PU=44.4 LR=52.5 LRA=80.5



5/13/2020 ACPERF, record # 56055

AC Induction Motor Performance Data

Record # 56073 - Typical performance - not guaranteed values

Winding: 37WGR912-R001	Type: 3738M	Enclosure: OPSB
-------------------------------	--------------------	------------------------

Nameplate Data				380 V, 50 Hz: High Voltage Connection	
Rated Output (HP)	10//7.5			Full Load Torque	27 LB-FT
Volts	230/460//190/380			Start Configuration	direct on line
Full Load Amps	25.4/12.7//23.4/11.7			Breakdown Torque	82.6 LB-FT
R.P.M.	1760//1465			Pull-up Torque	45.8 LB-FT
Hz	60//50	Phase	3	Locked-rotor Torque	53.2 LB-FT
NEMA Design Code	B	KVA Code	H	Starting Current	75.1 A
Service Factor (S.F.)	1.15			No-load Current	4.96 A
NEMA Nom. Eff.	89.5	Power Factor	82	Line-line Res. @ 25°C	1.258 Ω
Rating - Duty	40C AMB-CONT			Temp. Rise @ Rated Load	41°C
S.F. Amps				Temp. Rise @ S.F. Load	51°C

Load Characteristics 380 V, 50 Hz, 7.5 HP

% of Rated Load	25	50	75	100	125	150	S.F.
Power Factor	44	66	77	81	84	84	83
Efficiency	86.8	90.6	91	90.2	88.9	87	89.4
Speed	1492.8	1485.3	1476.8	1467.6	1457.7	1444.8	1462
Line amperes	5.62	7.15	9.23	11.7	14.3	17.4	13.3

Performance Graph at 380V, 50Hz, 7.5HP Typical performance - Not guaranteed values

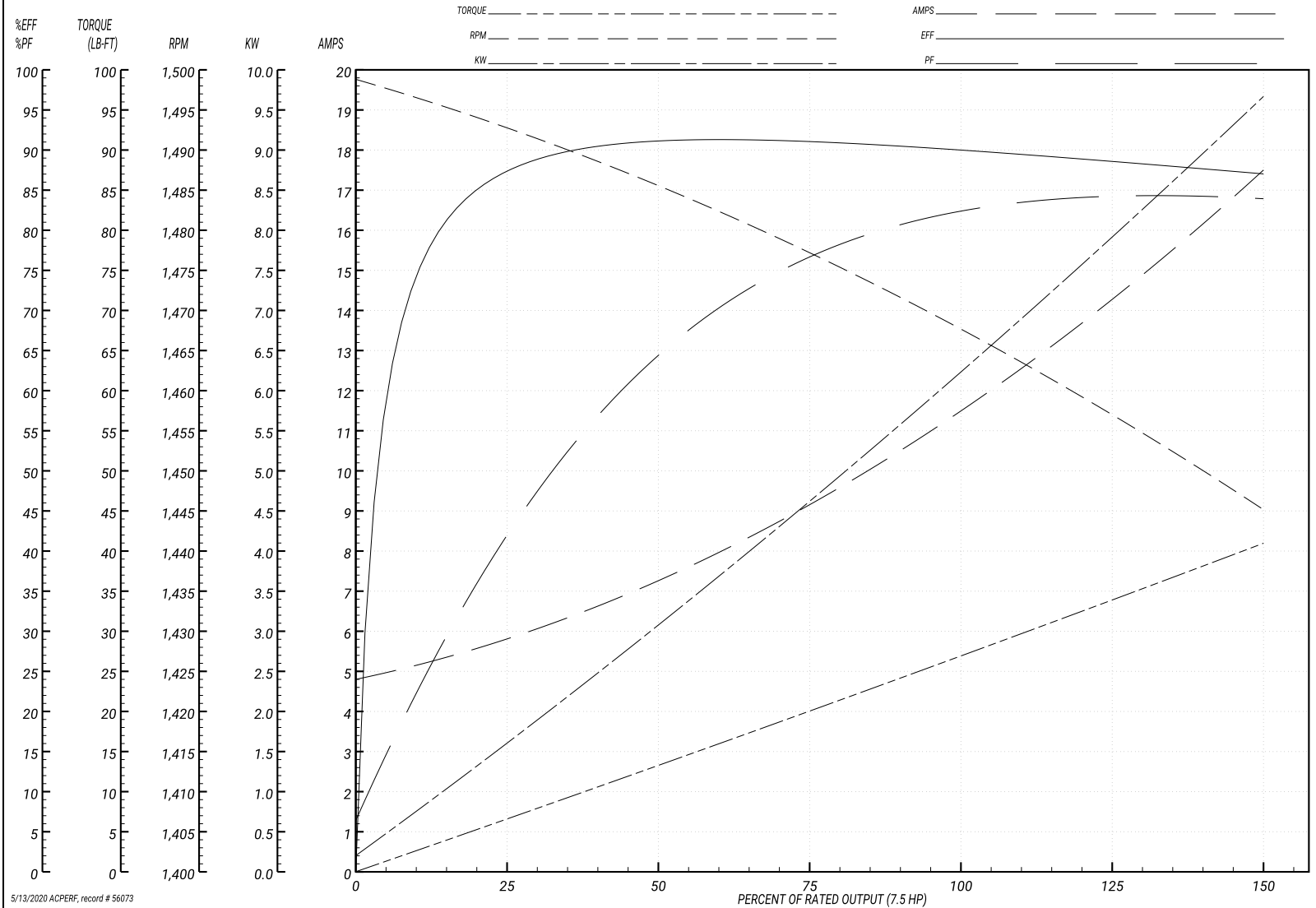
ABB Motors and Mechanical Inc.

WINDING # 37WGR912

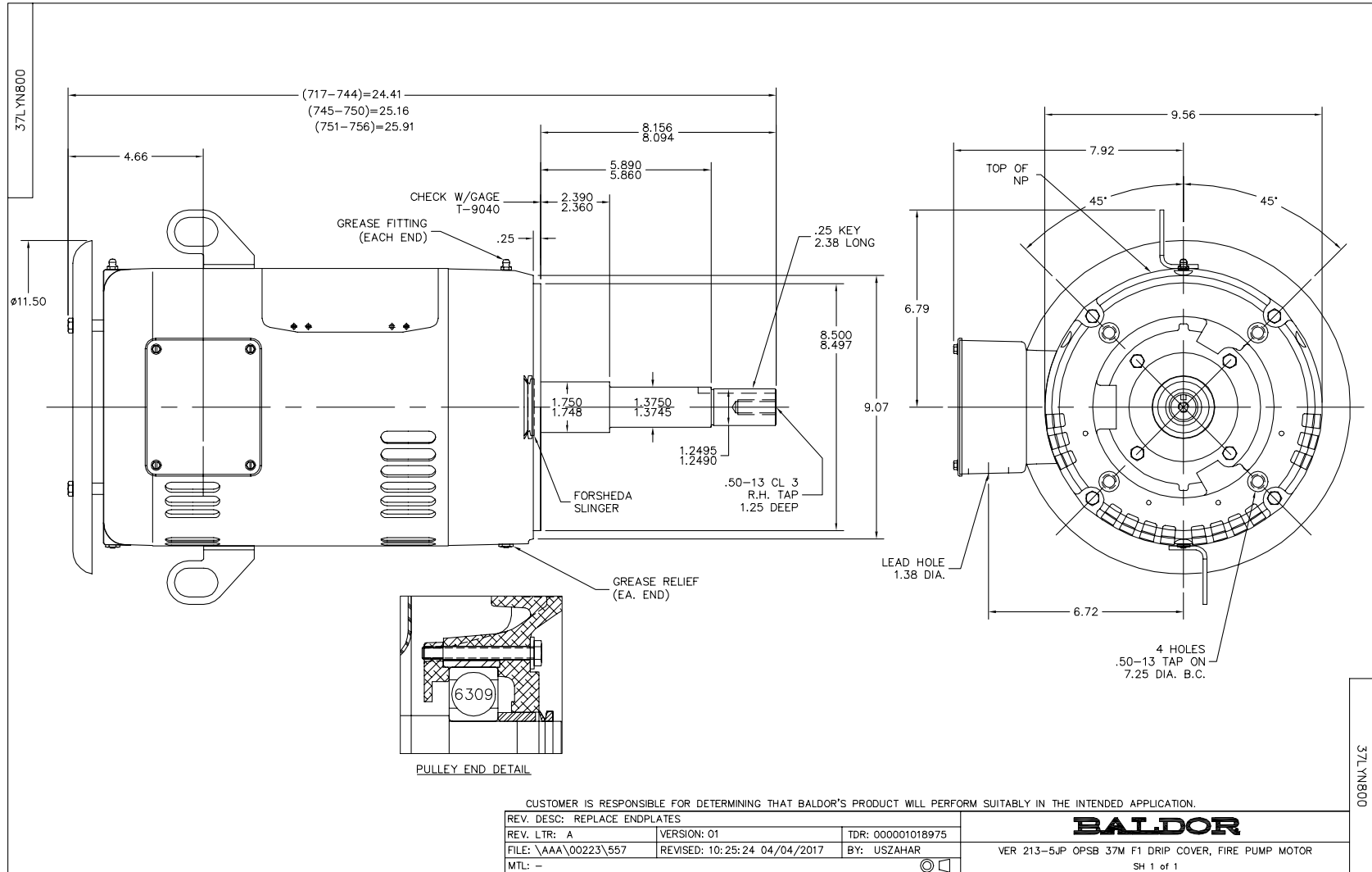
Typical performance - not guaranteed values.

7.5 HP 3 PH 50 HZ 1467.6 RPM 380 V 3738M

TORQUES(LB-FT): PO=82.6 PU=45.8 LR=53.2 LRA=75.1



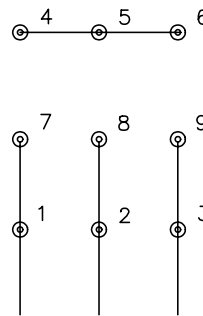
5/13/2020 ACPERF, record # 56073



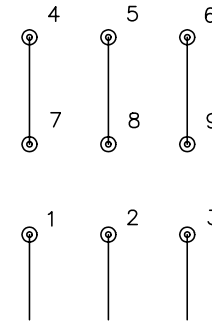
CD0005



LOW VOLTAGE
(2Y)



HIGH VOLTAGE
(1Y)



NOTES:

1. INTERCHANGE ANY TWO LINE LEADS TO REVERSE ROTATION.
2. OPTIONAL THERMOSTATS ARE PROVIDED WHEN SPECIFIED.
3. ACTUAL NUMBER OF INTERNAL PARALLEL CIRCUITS MAY BE A MULTIPLE OF THOSE SHOWN ABOVE.
4. LEAD COLORS ARE OPTIONAL. LEADS MUST ALWAYS BE NUMBERED AS SHOWN.

REV. DESC: REVISE TO SHOW OPTIONAL COLORS			
REV. LTR: E	BY: JLP	REVISED: 01/19/99 10:15	TDR: 0171435
900000		FILE: AAA00005140	MDL: -
		MTL: -	

BALDOR ELECTRIC Co.

3PH, DV, 9 LEADS

CD0005